

SMART Board™ Interactive Whiteboard System

Specifications – Model 660i

Physical Specifications

Unifi™ 35 Projector

Size 25 7/8" W × 14 3/8" H × 41 1/2" D (Max.)
(65.7 cm × 36.5 cm × 105.4 cm)

Extended Connection Panel 7 5/8" W × 1 1/4" H × 1 3/8" D
(19.4 cm × 3.2 cm × 3.5 cm)

Weight 33 lb. (15.0 kg)

Shipping Size 30" W × 19" H × 45" D
(76.2 cm × 48.3 cm × 114.3 cm)

Shipping Weight 52 lb. (23.6 kg)

SMART Board 660 Interactive Whiteboard

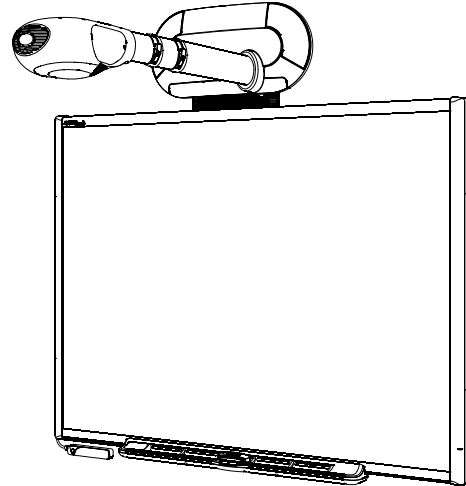
Size 54 3/4" W × 41 5/8" H × 5 1/8" D
(139.1 cm × 105.7 cm × 13.0 cm)

Active Screen Area 51 1/4" W × 38 1/4" H (130.2 cm × 97.2 cm)
64" diagonal (162.6 cm)

Weight 21 lb. 14 oz. (9.9 kg)

Shipping Size 46" W × 64 1/2" H × 5 1/2" D
(116.8 cm × 163.8 cm × 14.0 cm)

Shipping Weight 35 lb. (15.9 kg)



All dimensions +/- 1/8" (3.2 mm). All weights +/- 2 lb. (0.9 kg).

Standard Features

Software	SMART Board™ software and Notebook™ software. Free software upgrades are available at www.smarttech.com/support/software/index.asp .
Certifications	UL (Canada/U.S.), CE, FCC, VCCI. Certifications for Japan and Mexico are pending.
Warranty	Two-year limited equipment warranty on the projector, control module and extended connection panel. The projector lamp has a 500 hour/90 day warranty. The interactive whiteboard has a five-year limited equipment warranty upon registration. See warranty documents for details.
Mounting Template	Template ensures a simple installation and accurate alignment between the Unifi 35 projector and your SMART Board 660 interactive whiteboard. Use in place of the installation instructions provided with the interactive whiteboard.
Cables	5' 11" (1.8 m) HD-DB15 male-to-male video, 9' 10" (3.0 m) DVI-I to HD-DB15 male video, 5' 11" (1.8 m) 3.5 mm stereo audio, and 5' 11" (1.8 m) and 16' 5" (5.0 m) USB cables provided.

Interactive Whiteboard Features

Pen Tray	Optical sensors in the pen tray detect when a pen or the eraser is lifted from the tray. LEDs show the active tool.
Pens and Eraser	Black, blue, red and green pens and a rectangular eraser.
Resolution	Touch resolution is approximately 4000 × 4000.
Screen Surface	The hard-coated polyester surface is tear proof, optimized for projection, compatible with dry-erase markers and is easily cleaned with whiteboard cleaner.
Digitizing Technology	Analog resistive
Frame Finish	Two-tone gray (approximates Pantone® gray 18-0601) and Ultrasonic Chrome (approximates metallic Pantone 877c)
Wall-Mount Bracket	32" (81.3 cm) wide with five screws and drywall anchors to support a wall-mounted interactive whiteboard.
Installation Instructions	Do not use when installing the 660i system. The installation instructions are for interactive whiteboard installations that do not include the Unifi projector.

Unifi 35 Projector Features

On-Screen Interface	Includes interactive tools for controlling the projector, making notes over projected images and saving ScratchPad™ pages to a USB storage device.	
Projector Head	Includes a focus ring and a side-mounted access door for changing the lamp.	
Display Type	True XGA (1024 × 768) projector	
Display Technology	DLP® technology by Texas Instruments® using a one panel 0.7" DDR DMD™ chipset and featuring Vikuiti™ Super Close Projection technology from 3M.	
Brightness	1500 ANSI lumens, typical	
Lamp Life	2000 hours (Standard mode), 3000 hours (Economy mode)	
Aspect Ratio	4:3 native, with support for 16:9	
Contrast Ratio	1000:1 (FO/FO) (minimum)	
Video Compatibility	NTSC/PAL/SECAM/Composite/S-video/Component (YPbPr/YCbCR)/SDTV (480i, 576i)/EDTV (480P, 576P)/HDTV (720P, 1080i) VGA/SVGA/SGA/SXGA/MAC/(UXGA)	
Synchronization	Auto image synchronization (auto tracking/frequency/position adjustment/source detect/phase detect)	
Scanning Rate	H-sync 15 kHz–82 kHz, V-sync 50 Hz–85 Hz	
Color	True color (16.7 million 24-bit colors)	
Audio System	Integrated stereo amplifier and speakers (20 watts per channel)	
Mounting Hardware	Hardware supplied for mounting the Unifi projector and the extended connection panel to framed and concrete walls.	
Input/Output Connections	DVI-I jack	- analog or digital projector video input
	HD-DB15 jack	- RGB video from computer, linked to extended connection panel
	Two 3.5 mm stereo jacks	- audio inputs, one linked to extended connection panel
	3.5 mm stereo jack	- audio output
	Mini DIN 4-pin connector	- S-video input, linked to extended connection panel
	RCA jack	- composite video input, linked to extended connection panel
	Two RCA jacks	- stereo audio input, linked to extended connection panel
	Three RCA jacks	- component video input
	Two USB A receptacles	- one for USB storage device, linked to extended connection panel
		- one for USB link to interactive whiteboard
	USB B receptacle	- computer data connection, linked to extended connection panel
	Power reset connector	- linked to extended connection panel Reset button
	AC power receptacle	- accepts standard IEC power cable or adapter
Projector Noise	34 dBA (Standard mode) / 32 dBA (Economy mode)	
Power Requirements	100V–240V AC 50/60 Hz, 450 W	
Power Switch	Master power control switch	
Power Cable	3 × 14' 9" (4.5 m) power cables provided (U.S., UK and Europe)	
Power Consumption	450 W maximum	
Remote Control	Provides an alternate method of controlling the 660i system's major features	

Extended Connection Panel Features

Input/Output Connections	HD-DB15 jack	- RGB computer video input
	3.5 mm stereo jack	- computer audio input
	USB A receptacle	- connection for USB storage device
	RCA jack	- composite video input
	Two RCA jacks	- stereo audio inputs
	Mini DIN 4-pin connector	- S-video input
	USB B receptacle	- computer data input
Power Button	Turns the Unifi projector and interactive whiteboard on or off	

Control Module Features

Power Button	Large power button, with illuminated status ring, turns the system on or off
Menu Button	Shows and hides the Unifi projector's on-screen interface
Volume Control	Adjusts the integrated audio system's volume

Storage and Operating Specifications

Storage	-22°F to 122°F (-30°C to 50°C) with 90% humidity, non-condensing
Operation	from 0' to 2500' (0 m to 762 m) 50°F to 95°F (10°C to 35°C) with 20–80% humidity, non-condensing from 2500' to 5000' (762 m to 1524 m) 50°F to 86°F (10°C to 30°C) with 20–80% humidity, non-condensing from 5000' to 10000' (1524 m to 3048 m) 50°F to 77°F (10°C to 25°C) with 20–80% humidity, non-condensing

SMART Board Software 9.5 Computer Requirements

Windows Computers	Pentium® II 450 MHz processor 128 MB of RAM (256 MB recommended) 136 MB of free hard disk space for minimum installation (511 MB for full installation with Gallery collections) Windows 2000 operating system (or later) Microsoft Internet Explorer® 6.0 (or later) Macromedia® Flash® player version 8 (or later)
--------------------------	---

NOTE: If you're using a Windows operating system that doesn't meet these minimum requirements, download SMART Board software service pack 4 from www2.smarttech.com/st/en-US/Support/Downloads/SBS/SBSv95Win.htm.

Requirements for SMART Video Player	700 MHz processor or faster recommended Microsoft® DirectX® technology 8.1 (or later)
--	--

Mac Computers	700 MHz processor (1 GHz or faster recommended) 128 MB of RAM (256 MB recommended) Mac OS X versions 10.3.9 and 10.4.x 148 MB of free hard disk space for minimum installation (423 MB for full installation with Gallery collections) Safari™ 1.3.2 or later SMART Board software version 9.5 supports Intel® processors (Universal Binary)
----------------------	---

NOTE: Previous versions of SMART Board software are compatible with earlier versions of the Mac OS X operating system. Download previous versions of SMART Board software from www2.smarttech.com/st/en-US/Support/Downloads/SBS/Mac/.

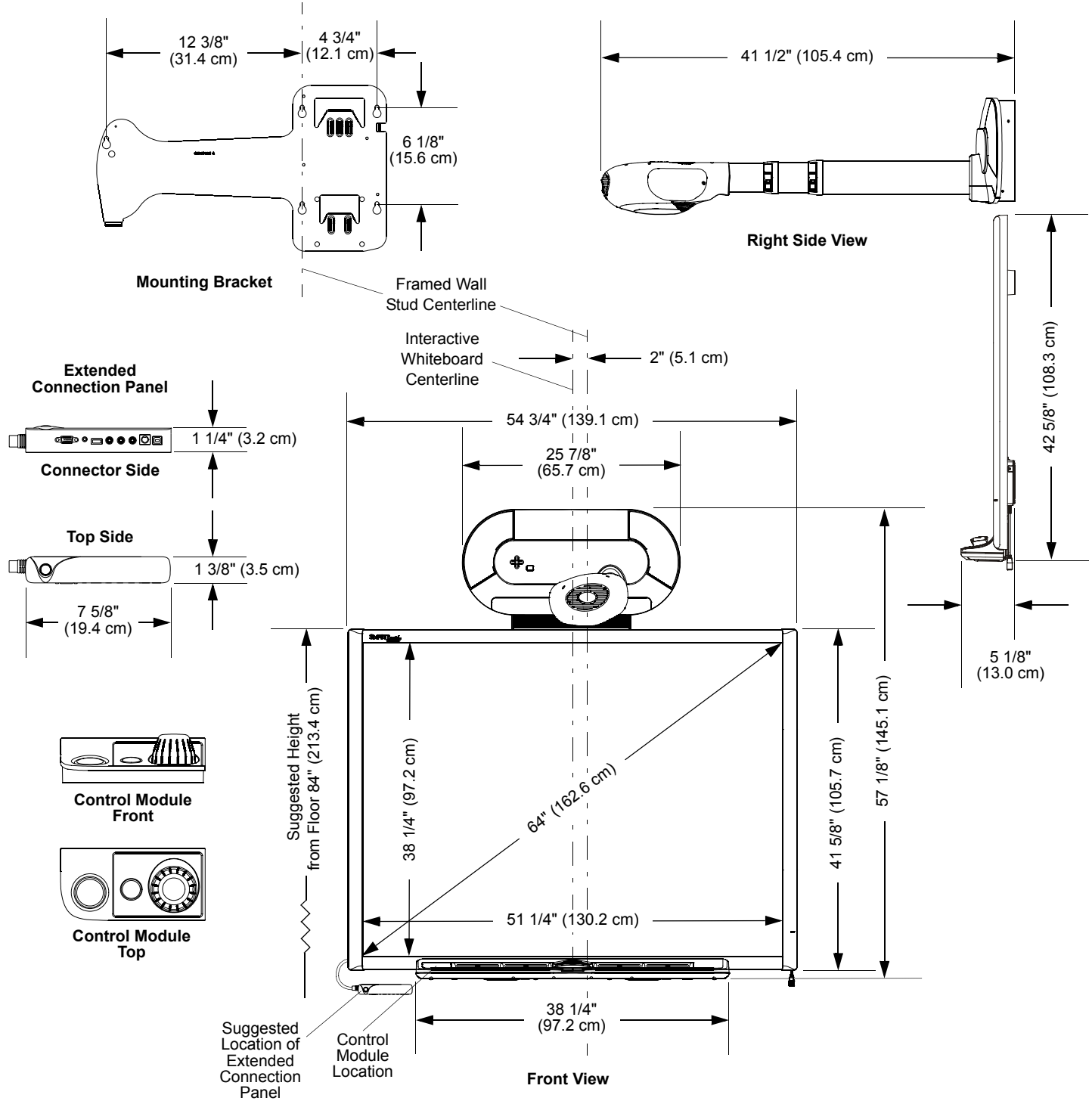
Optional Accessories

USB-XT	16' 5" (5.0 m) USB active extension cable
CAT5-XT	USB to Cat 5 cable extender set, includes 2 × 6' 7" (2 m) USB cables
RPEN-ER	Replacement set of four pen tray pens (black, red, blue and green) and a rectangular eraser
RPEN	Replacement set of four pen tray pens (black, red, blue and green)
USB-GW	GoWire™ SMART Board software auto-launch USB cable

SMART Order Number

660i	SMART Board 660i interactive whiteboard system includes a SMART Board 660 interactive whiteboard integrated with a Unifi 35 projector.
-------------	--

Physical Dimensions



SMART Technologies Inc.
 1207 – 11 Avenue SW, Suite 300
 Calgary, AB T3C 0M5
 CANADA



www.smarttech.com/support www.smarttech.com/contactsupport
 Support +1.403.228.5940 or Toll Free 1.866.518.6791 (Canada/U.S.)

© 2007 SMART Technologies Inc. All rights reserved. SMART Board, Notebook, GoWire, ScratchPad, Unifi, smarttech and the SMART logo are either trademarks or registered trademarks of SMART Technologies Inc. in Canada, the U.S. and/or other countries. Microsoft, Windows and Windows NT are registered trademarks of Microsoft Corporation in the U.S. and other countries. DLP and DMD are registered trademarks of Texas Instruments. Vikuiti is a trademark of 3M company. All other third-party product and company names may be trademarks of their respective owners. U.S. Patent Nos. 5,448,263; 6,141,000; 6,326,954; 6,337,681; 6,741,267, 6,747,636 and 7,151,533. Canadian Patent No. 2,058,219. Other U.S., Canadian and foreign patents pending. Specifications are subject to change without notice. 04/2007.